



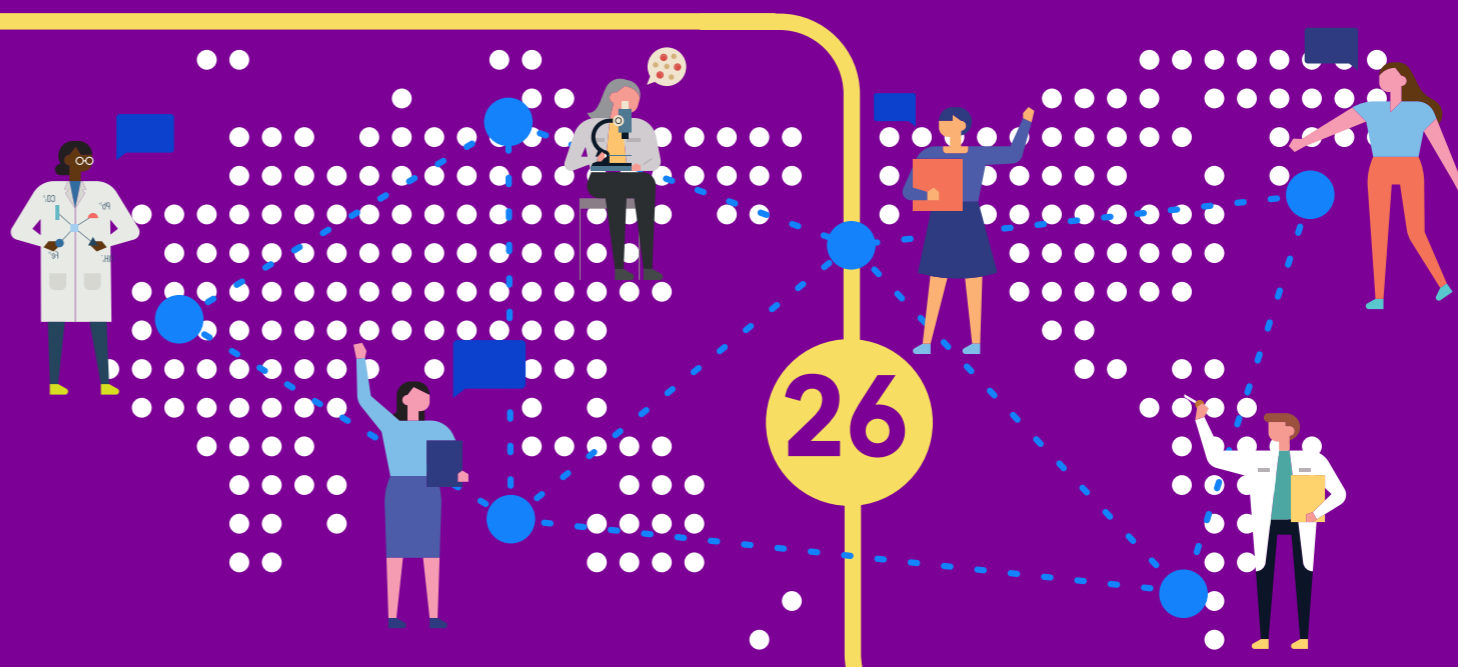
# Accelerating Cancer Immunotherapy Research

Research to extend the benefit of cancer immunotherapy is taking place all over the world.

Within **imCORE**, we believe new treatments can be found quicker if **we all work together**.



**imCORE** is a network of **26 leading cancer immunotherapy research institutions**, collaborating to **accelerate progress** in cancer immunotherapy research and **optimise outcomes** for cancer patients.



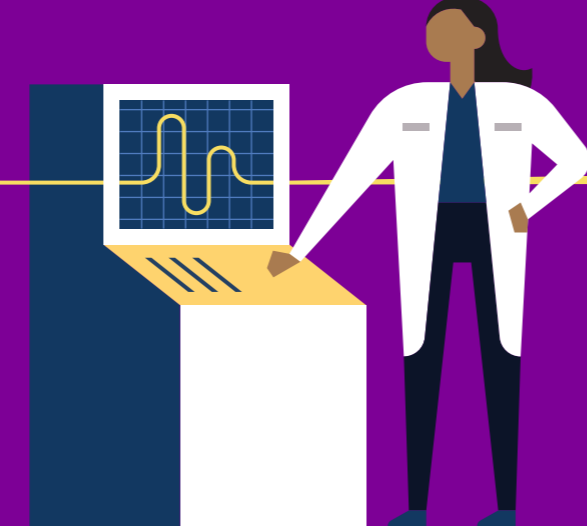
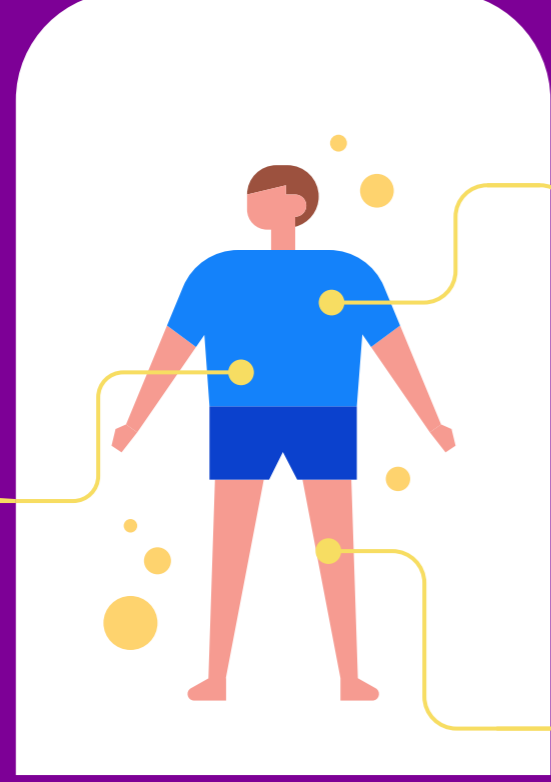
We're talking about **true partnerships**, that leverage our **collective resources, expertise and cutting-edge technologies**, to identify solutions.

**Together, we can advance exponentially faster than when working in isolation.**

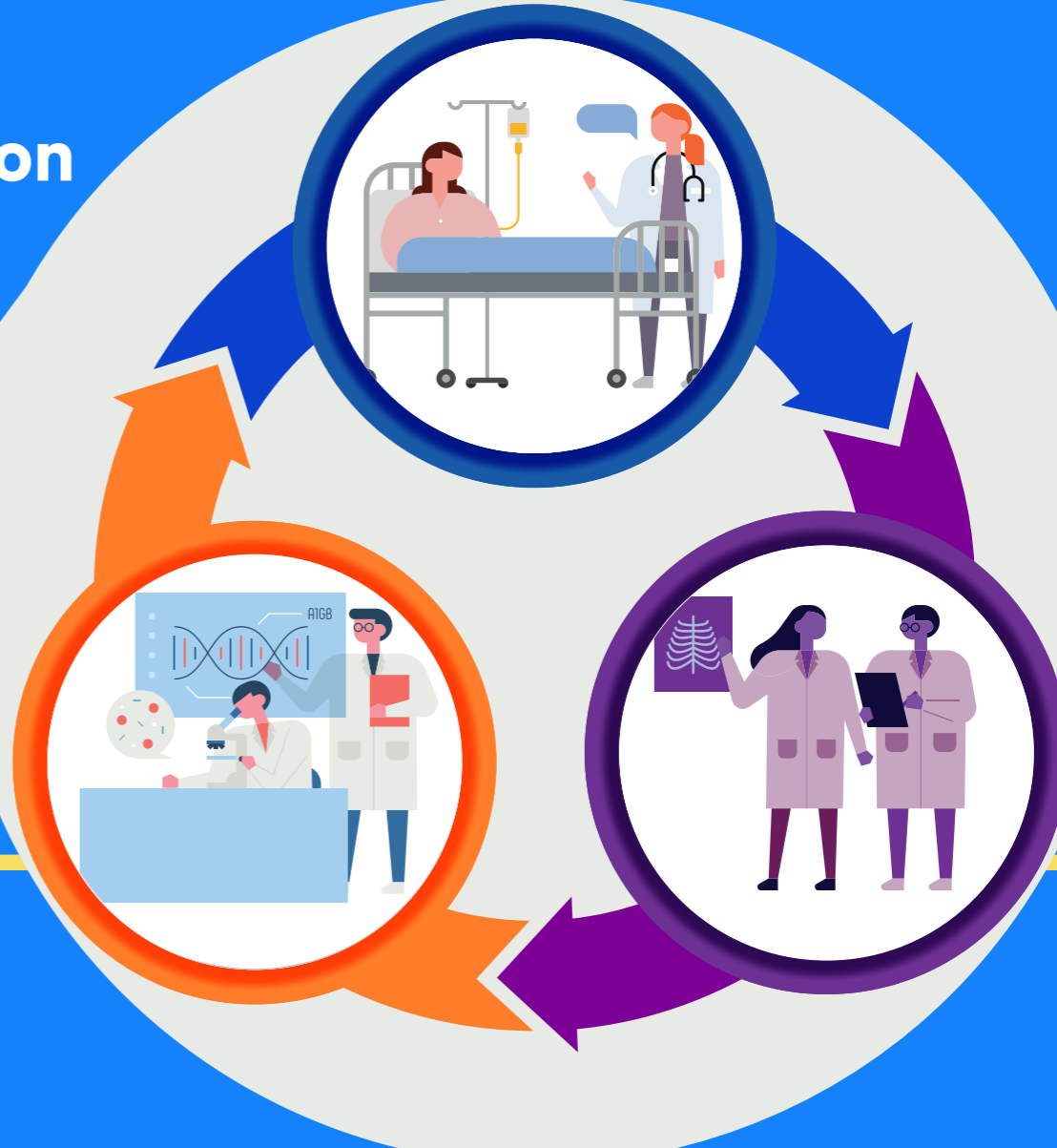


## Our unique offering...

- 1 A standardised multiple biomarker platform;** uniformly aggregating data.
- 2 A collaborative data sharing framework;** encouraging secondary interrogation of data.
- 3 Institutional research support by dedicated teams;** leveraging valuable resources and man power.
- 4 A jointly developed scientific strategy;** harnessing collective knowledge and ideas to determine future directions.

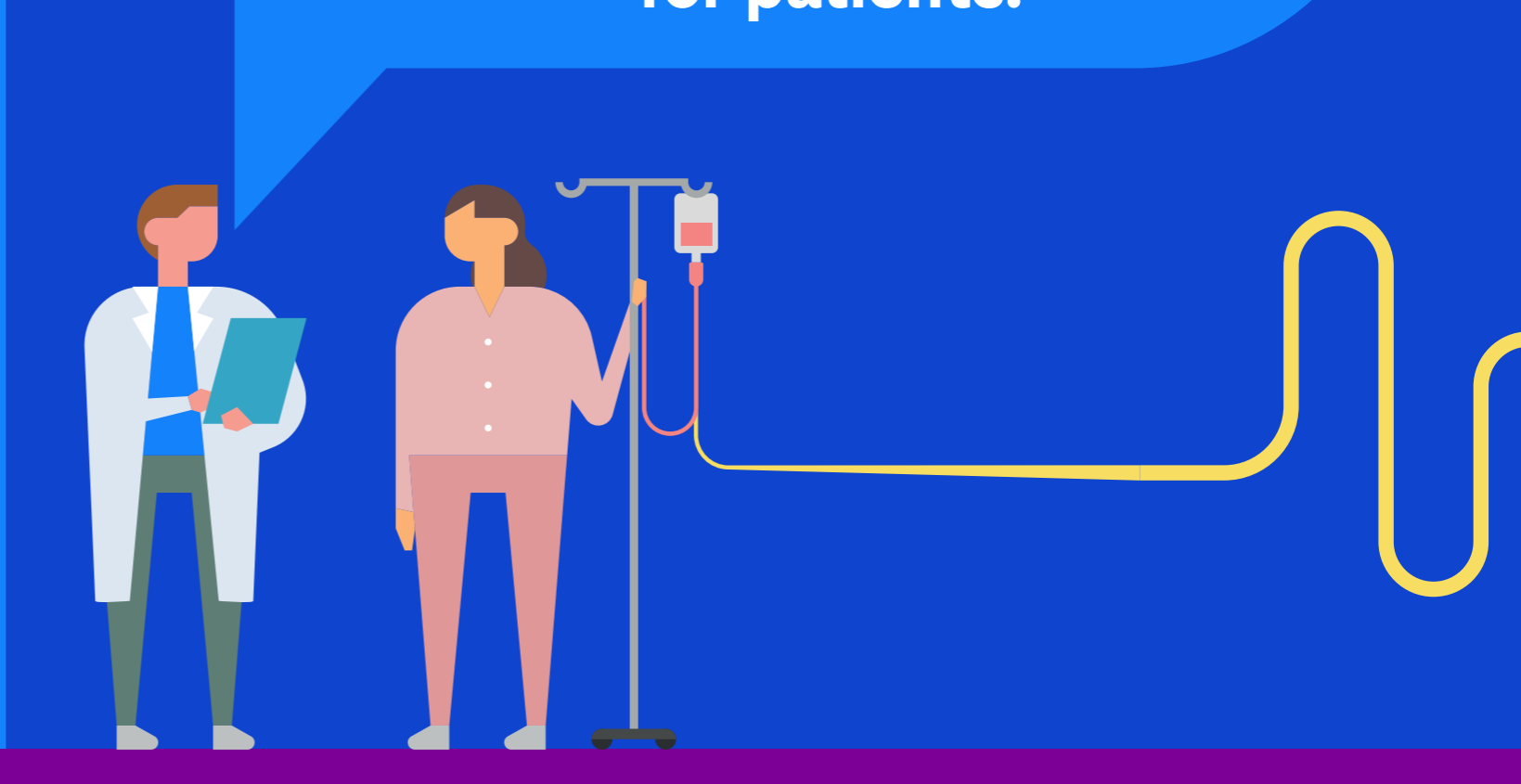


By supporting pre-clinical, translational and clinical research, we seek to **drive innovation** from the **bedside to the bench and back again**, in a continuous 'learning loop'.



In doing so, we are performing research that will ultimately help clinicians **select the treatments** most likely to benefit the **individual patient**.

Within **imCORE**, we believe that through **true partnerships** we can **accelerate cancer immunotherapy research** to **transform cancer treatment** for patients.



- ASAN Medical Center, South Korea
- Centre Hospitalier Régional Universitaire de Lille, France
- Centre Léon Bérard, France
- City of Hope, USA
- Clínica Universidad de Navarra, Spain
- Columbia University, USA
- Dana-Farber Cancer Institute, USA
- Essen University Hospital, Germany
- Gustave Roussy, France
- Institut Claudius Regaud-IUCT-O, France
- Johns Hopkins Medicine, USA
- Ludwig Branch at University Hospital of Lausanne (CHUV), Switzerland
- Memorial Sloan Kettering Cancer Center, USA
- Mount Sinai Medical School, USA
- Netherlands Cancer Institute, Netherlands

- Peter MacCallum Cancer Centre, Australia
- Princess Margaret Cancer Centre, University Health Network, Canada
- St Bartholomew's Hospital, run by Barts Health NHS Trust, UK
- Sarah Cannon Research Institute, USA
- Seoul National University Hospital, South Korea
- The Royal Marsden NHS Foundation Trust, UK
- University of California, San Francisco, USA
- University Hospital Heidelberg within National Center for Tumor Diseases (NCT), Germany
- Vall d'Hebron Institute of Oncology, Spain
- Washington University in St. Louis, USA
- Yale Cancer Center, USA
- F. Hoffmann-La Roche, Switzerland
- Genentech, USA