

Roche's Commitment to Universal Health Coverage (UHC)

Roche

The Path to Advancing Sustainable Healthcare

UHC is an investment, not a cost. It helps build stable economies and strong societies and is fundamental to addressing inequalities in access to quality care. Despite a positive trend towards UHC, many countries are not on track to achieve UHC by 2030.

We believe everyone should have access to timely and affordable diagnosis and treatment, as well as standard of care services and interventions, no matter where people live. Roche remains committed to doing our part and we call on stakeholders across the healthcare spectrum to continue partnering to achieve that goal.

Key drivers and Roche's commitments to enable UHC

As a member of the UHC2030 Private Sector Constituency, Roche has long been committed to driving UHC implementation with partners by [developing patient-centric solutions](#) and equitable access to quality-assured, standard of care services and interventions.



Access to early screening, diagnosis and treatment are essential in driving best health outcomes and best use of healthcare resources

Our Contribution: We are working with local partners to understand access challenges to diagnostics and medicines and to put in place solutions to overcome them. In Kenya, we are supporting the EMPOWER project, which provides integrated cancer care for people with breast and cervical cancer, from screening to diagnosis and treatment, as well as screening for hypertension and diabetes.



Sustainable funding and financing in order to drive meaningful progress in UHC and to have a mindset that healthcare is an investment

Our Contribution: We are supporting countries in mobilising and deploying sustainable finances to achieve their health-related goals and collaborating on projects. For example, in Nigeria we worked with public and private partners to develop the Nigerian Cancer Health Fund.



Inclusion of non-communicable diseases (NCDs), alongside existing commitments to infectious diseases, and ensure that UHC benefit packages include standard of care screening, diagnosis and treatment

Our Contribution: We are contributing to patient-centred NCD solutions with our innovative Pharma and Diagnostics portfolio to address existing and growing disease burdens. We have a long history working in NCDs, in particular in oncology, ophthalmology and neuroscience and work with organisations such as City Cancer Challenge, to partner on solutions to expand access to quality healthcare. All of this sits alongside our commitment to communicable diseases, in particular through our significant range of diagnostics tests.



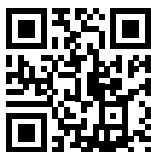
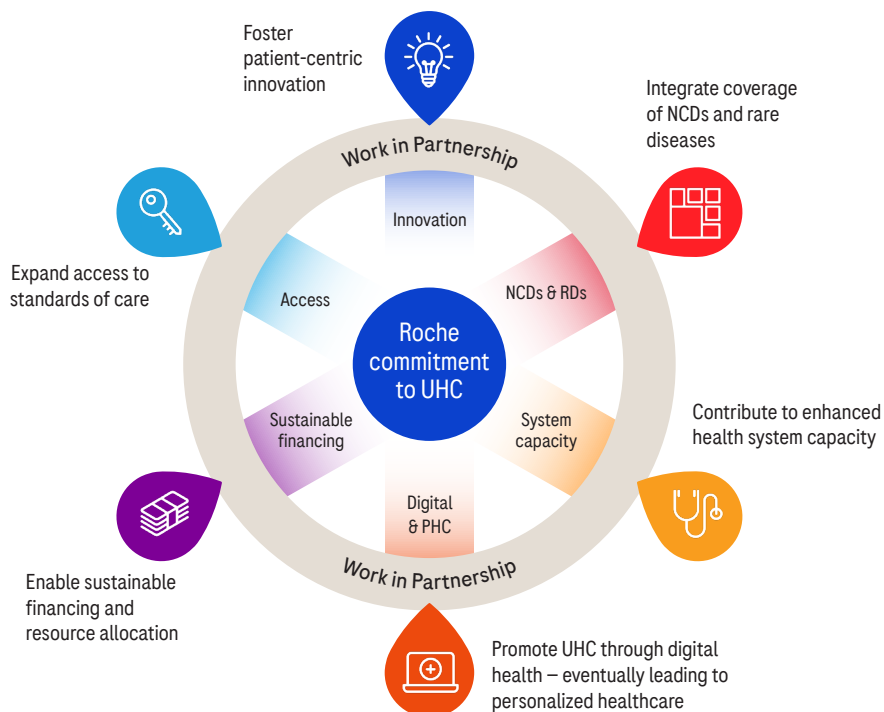
Digital health should increasingly be used as an enabler of UHC

Our Contribution: We are advancing patient-centric digital solutions, such as virtual clinical decision-making support and disease management tools to expand timely access to detection, prevention and treatment. In France, Roche has established a public-private partnership with Unicancer to improve access to health data and advance cancer care.



Health system capacity is crucial to enable resilient and sustainable healthcare systems

Our Contribution: We are contributing to health systems, including through educational support for healthcare professionals, such as our Pink Consulting room programme in Colombia, which is establishing specialised clinics with trained physicians for early detection and standardised medical care. We are also helping to address overburdened healthcare systems by supporting professionals with expertise in pathology and laboratory medicine.



Scan this QR code to learn more about how
we're helping to make UHC a reality

