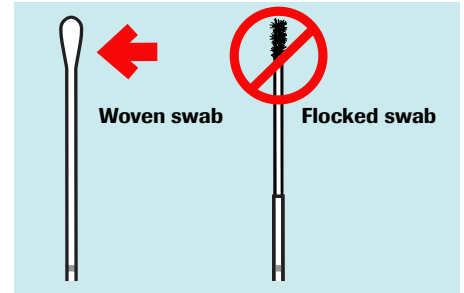


Vaginal Swab Specimen Collection Guide

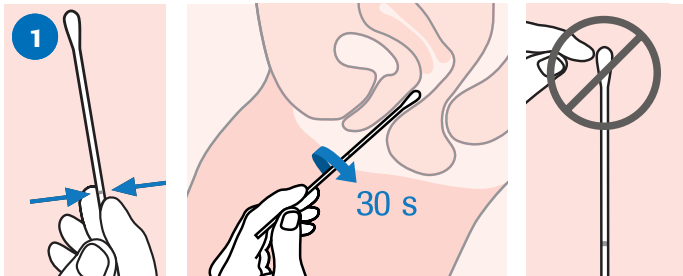
Clinician-collection with the cobas® PCR Media Dual Swab Sample Kit

PROCEDURAL NOTES:

- Discard the flocked swab, as it is not needed for this procedure. **Use only the woven swab.**
- Vaginal lubricants, speculum jellies, creams, and gels containing carbomer(s) may interfere with the test and should not be used during or prior to sample collection.
- If the collected specimen contains excess blood (specimen has a red or brown color), it should be discarded and not used for testing.
- Avoid contact of the **cobas®** PCR Media with the skin, eyes or mucous membranes. If contact does occur, immediately wash with large amounts of water.

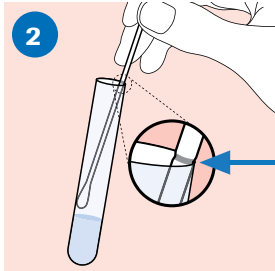


NOTE: Do not pre-wet the swab in **cobas®** PCR Media before collection.



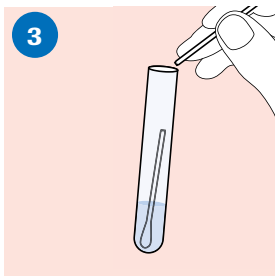
COLLECT:

- To collect the specimen, hold the woven swab with the scoreline above your hand and insert the swab about 5 cm (2 inches) into the vaginal opening.
- Gently turn the swab for about 30 seconds while rubbing the swab against the walls of the vagina.
- Withdraw the swab carefully.
- Do not let the swab touch any surface before placing it into the collection tube.



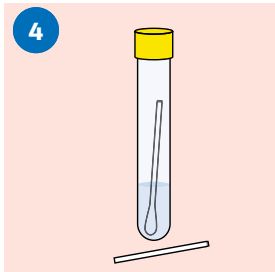
ALIGN:

- Remove the cap from the **cobas®** PCR Media Tube and lower the swab specimen into the tube until the visible scoreline on the swab shaft is aligned with the tube rim.
- The bud of the swab should not be submerged into the liquid prior to breaking the shaft.



BREAK:

- Carefully leverage the swab against the tube rim to break the swab shaft at the scoreline.



CLOSE:

- Tightly re-cap the **cobas®** PCR Media Tube. The specimen is now ready for transport.
- Discard the top portion of the swab.

SPECIMEN TRANSPORT AND STORAGE:

- Transport and store the **cobas®** PCR Media Tube containing the collection swab at 2°C to 30°C.
- The specimen should only contain 1 woven swab and may be rejected if the tube contains no swab or 2 swabs.